

**SUSTAINABILITY IN ACTION**

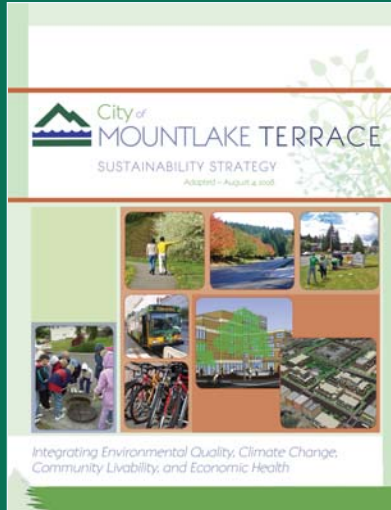
City of Mountlake Terrace  
April 10, 2014

Edith Duttlinger  
Senior Planner



**HOW HAS OUR CITY PLANNED  
FOR SUSTAINABILITY?**

## BASIC PLANS & PUBLIC PROCESSES



- Comprehensive Plan
- Subarea plans
- **Sustainability Strategy**
- Economic Vitality Strategy with "Clean Tech" Appendix

## FOCUS OF SUSTAINABILITY STRATEGY

- A. Ways for City to be an example of doing the right thing
- B. Ways for City to encourage others
- C. Use key performance measures

## CITY TO BE EXAMPLE...

Thru own facilities & practices, such as:

- New City buildings – LEED silver or higher
- Energy efficiencies for existing City buildings
- Management of public properties
- Infrastructure projects
- Procurement and disposal practices
- Fuel efficiencies for fleet vehicles
- Partnerships



## CITY TO ENCOURAGE OTHERS...

Thru means such as:

- Other plans & strategies
- Updates to codes & standards
- Public information/education
- Promotion of energy & water efficiency for homes/businesses
- Incentives, awards



## KEY LAND USE STRATEGIES

- Compact development
- Walkability & bicycling
- Town Center revitalization
- Range of housing choices
- Transit-orientation
- Mixed uses
- Attractive amenities (parks, etc.)



**HOW IS OUR CITY  
IMPLEMENTING ITS  
SUSTAINABILITY STRATEGY?**

## IMPLEMENTATION

- Internal
- External



## IMPLEMENTATION

- Matrix of responsibilities
  - Short-term
  - Mid-term
  - Long-term



## PERFORMANCE MEASURES TRACKED & REPORTED ANNUALLY

At least 1 measure for each goal:

- Education
- Mobility
- Green Spaces
- Energy Use
- Water Use
- Resources & Material Use



## GREEN TEAM



- Admin/Finance
- City Manager
- Community & Economic Development
- Engineering Services
- Police
- Public Works
- Recreation & Parks





## INFRASTRUCTURE PROJECTS



## ELECTRIC VEHICLE CHARGING STATIONS AT TRANSIT CENTER



## OTHER PLANNING

- Comp Plan Updates for Sustainability
- Transit-Oriented Development Study
- Transit Service Strategy
- Transportation Master Plan
- Town Center Plan
- Melody Hill Subarea Plan
- Environmental studies
- TDR Study
- Civic Facilities Assessment
- TDM Strategy
- Electric Vehicle Strategy
- Recreation Parks & Open Space Plan
- Arts & Culture Strategy
- Shoreline Management update



## CODE UPDATES (INCL. FORM-BASED\*)

- Town Center
- All commercial districts
- Bicycle Parking
- Electric Vehicle infrastructure
- Parking flexibility
- Complete Streets
- Housing choices
- Transp. demand management
- Design standards
- "Planned Actions"
- Recreation & Parks
- SEPA updates
- Shoreline Management updates
- Stormwater management
- Transfer of Development Rights





## TOOLS & INCENTIVES

- Transportation Benefit District (TBD)
- Multifamily property tax abatement
- Planned Action ordinances
- Customer-friendly permitting services
- Economic Development office
- Public info:
  - Trees
  - Driveway options
  - Green tips, etc.

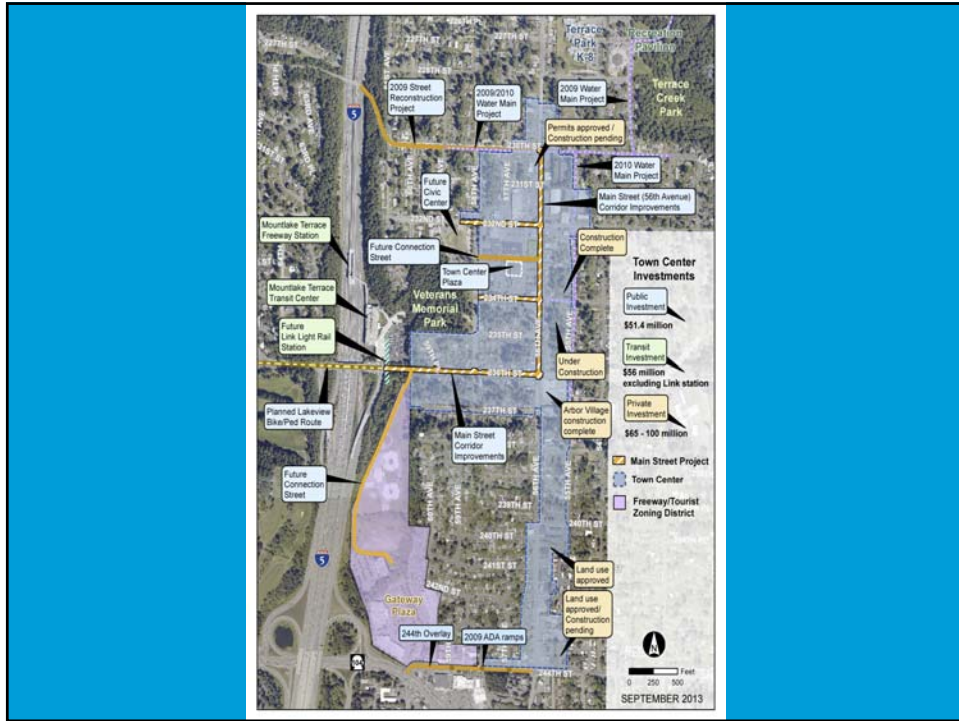


## CURRENT ACTIVITIES/EXPLORATION

- Urban Forestry Program
- Regional Code Collaboration
- District Energy System
- Light Rail Planning







## ARBOR VILLAGE BUILDING





## MAIN STREET



## CHALLENGES & OPPORTUNITIES



- Staff resources (i.e., time)
- Cross-departmental coordination
- Selecting performance measures
- Funding
- Leadership
- Communication
- Continuity



## LESSONS TO CONSIDER

1. Get broad commitment
2. Communicate often & in multiple ways
3. Implement comprehensively
4. Report on performance & celebrate successes!



## MORE INFORMATION?

*Search online:*  
[cityofmlt.com/sustain](http://cityofmlt.com/sustain)

